

STOLARKA OKIENNA

ściany istniejące z cegły pełnej
kolor naturalny czerwony, układ krzyżowy
– złożyć się renowację ścian

wyburzenia

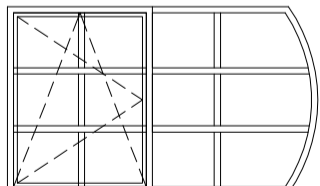
świetlik dachowy

pokrycie dachu – papa kolor czarny

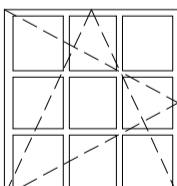
stolarka okienna kolor antracyt RAL 7016

wnęki tynkowane tynkiem cementowo –wapiennym
odtworzenie koloru pierwotnego

iluminacja elewacji /z kierunkiem wiązki światła/

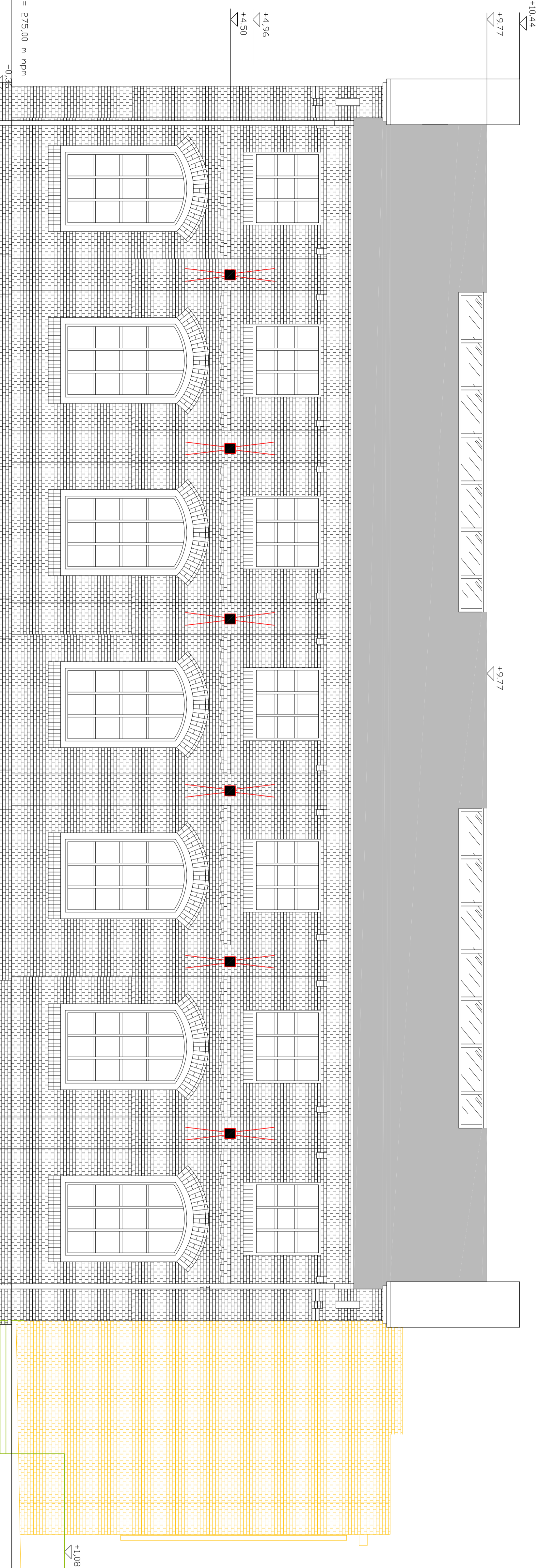


typ 1
schemat otwarcia



typ 2
schemat otwarcia

stolarka okienna stolarska kolor antracyt rd 7016
szpros klejone, profilowane /tropezowe/



+/- 0.00 = 275.00 m n.p.m.

-0.35

+1.08

+4.96

+4.50

+9.77

+10.44

+9.77

+4.96

+4.50

-0.35

+/- 0.00 = 275.00 m n.p.m.

-0.35

+1.08

+4.96

+4.50

+9.77

+10.44

+9.77

+4.96

+4.50

-0.35

+/- 0.00 = 275.00 m n.p.m.

-0.35

+1.08

+4.96

+4.50

+9.77

+10.44

+9.77

+4.96

+4.50

-0.35

+/- 0.00 = 275.00 m n.p.m.

-0.35

+1.08

+4.96

+4.50

+9.77

+10.44

+9.77

+4.96

+4.50

-0.35

+/- 0.00 = 275.00 m n.p.m.

-0.35

+1.08

+4.96

+4.50

+9.77

+10.44

+9.77

+4.96

+4.50

-0.35

+/- 0.00 = 275.00 m n.p.m.

-0.35

+1.08

+4.96

+4.50

+9.77

+10.44

+9.77

+4.96

+4.50

-0.35

+/- 0.00 = 275.00 m n.p.m.

-0.35

+1.08

+4.96

+4.50

+9.77

+10.44

+9.77

+4.96

+4.50

-0.35

+/- 0.00 = 275.00 m n.p.m.

-0.35

+1.08

+4.96

+4.50

+9.77

+10.44

+9.77

+4.96

+4.50

-0.35

+/- 0.00 = 275.00 m n.p.m.

-0.35

+1.08

+4.96

+4.50

+9.77

+10.44

+9.77

+4.96

+4.50

-0.35

+/- 0.00 = 275.00 m n.p.m.

-0.35

+1.08

+4.96

+4.50

+9.77

+10.44

+9.77

+4.96

+4.50

-0.35

+/- 0.00 = 275.00 m n.p.m.

-0.35

+1.08

+4.96

+4.50

+9.77

+10.44

+9.77

+4.96

+4.50

-0.35

+/- 0.00 = 275.00 m n.p.m.

-0.35

+1.08

+4.96

+4.50

+9.77

+10.44

+9.77

+4.96

+4.50

-0.35

+/- 0.00 = 275.00 m n.p.m.

-0.35

+1.08

+4.96

+4.50

+9.77

+10.44

+9.77

+4.96

+4.50

-0.35

+/- 0.00 = 275.00 m n.p.m.

-0.35

+1.08

+4.96

+4.50

+9.77

+10.44

+9.77

+4.96

+4.50

-0.35

+/- 0.00 = 275.00 m n.p.m.

-0.35

+1.08

+4.96

+4.50

+9.77

+10.44

+9.77

+4.96

+4.50

-0.35

+/- 0.00 = 275.00 m n.p.m.

-0.35

+1.08

+4.96

+4.50

+9.77

+10.44

+9.77

+4.96

+4.50

-0.35

+/- 0.00 = 275.00 m n.p.m.

-0.35

+1.08

+4.96

+4.50

+9.77

+10.44

+9.77

+4.96

+4.50

-0.35

+/- 0.00 = 275.00 m n.p.m.

-0.35

+1.08

+4.96

+4.50

+9.77

+10.44

+9.77

+4.96

+4.50

-0.35

+/- 0.00 = 275.00 m n.p.m.

-0.35

+1.08

+4.96

+4.50

+9.77

+10.44

+9.77

+4.96

+4.50

-0.35

+/- 0.00 = 275.00 m n.p.m.

-0.35

+1.08

+4.96

+4.50

+9.77

+10.44

+9.77

+4.96

+4.50

-0.35

+/- 0.00 = 275.00 m n.p.m.

-0.35

+1.08

+4.96

+4.50

+9.77

+10.44

+9.77

+4.96

+4.50

-0.35

+/- 0.00 = 275.00 m n.p.m.

-0.35

+1.08

+4.96

+4.50

+9.77

+10.44

+9.77

+4.96

+4.50

-0.35

+/- 0.00 = 275.00 m n.p.m.

-0.35

+1.08

+4.96

+4.50

+9.77

+10.44

+9.77

+4.96

+4.50

-0.35

+/- 0.00 = 275.00 m n.p.m.

-0.35

+1.08

+4.96

+4.50

+9.77

+10.44

+9.77

+4.96

+4.50

-0.35

+/- 0.00 = 275.00 m n.p.m.

-0.35

+1.08

+4.96

+4.50

+9.77

+10.44

+9.77

+4.96

+4.50

-0.35

+/- 0.00 = 275.00 m n.p.m.

-0.35

+1.08

+4.96

+4.50

+9.77

+10.44

+9.77

+4.96

+4.50

-0.35

+/- 0.00 = 275.00 m n.p.m.

-0.35

+1.08

+4.96

+4.50

+9.77

</